

Masterplanned community to bring Yaletown chic to Burnaby



Concord Pacific's expertise building large-scale communities to help complete revitalization of Brentwood neighbourhood

Yaletown is coming to Burnaby. That's the main idea behind Concord Brentwood, a master-planned community that will encompass – and transform – 26 acres in Burnaby's coveted Brentwood neighbourhood, according to Matt Meehan, senior vice-president of planning with Concord Pacific Developments Inc.

The renowned development company is known for building

large-scale communities such as Concord Pacific Place in Vancouver's Yaletown – one of Canada's largest urban masterplanned communities, located on the former Expo lands on False Creek – as well as a host of other prestigious developments in Metro Vancouver, Toronto, Calgary and London, England. Now it has its sights set on Brentwood.

"[Concord Brentwood] will transform an underutilized industrial

area into a beautiful and diverse mixed-use park-side community that completes the exciting revitalization of the Brentwood Town Centre neighbourhood," Meehan says.

The masterplanned community, Concord's largest in Burnaby, will sit in the heart of Brentwood, south of Lougheed Highway between Beta and Delta avenues and extending south past Dawson Street, and will be anchored by a 13-acre park and

green space. Brentwood Town Centre – currently undergoing massive redevelopment into a world-class shopping, dining and entertainment destination – and its SkyTrain station are a short walk away.

"This was planned closely with the City of Burnaby to be an extremely livable family community. It is intended to round out the current mix of development in Brentwood and provide future residents a valuable



George Wainborn Park in Yaletown is a superb example of Concord Pacific's success in revitalizing a neighbourhood

park-side alternative," Meehan says. The green space will be developed as "a combination of passive and sports/events programming with recreational infrastructure interlaced," he adds, and a proposed new public school is also planned as part of the community.

The development will feature "endless amenities [like] Concord Pacific's Signature Super Club and a Village Central, which will be introduced in Phase 2, consisting of a proposed new grocery store, cafés, and other service-oriented commercial retailers," Meehan says.

Designed by award-winning architect James K.M. Cheng of Vancouver, Concord Brentwood will consist of 10 glass and concrete towers, most between 40 and 45 storeys tall. Tower 1 of Phase 1 will consist of 426 units on 45 floors. Signature proposed exterior architectural elements include asymmetrical supporting pillars that extend approximately 38 feet from ground level, creating "a dynamic visual presence as well as architectural support for the tower," says Peter Udzenija, director of corporate relations with Concord Pacific.

Tower 1's one- to three-bedroom homes will range in size from approximately 534 square feet to 1,239 square feet. Luxurious finishings and interior features will include fully integrated Bosch appliances, engineered-quartz countertops, marble tile backsplashes in shower

surrounds and bathroom flooring, and wood grain laminate finish for closet organizers, door trim and interior suite doors.

"Most corner two- and three-bedrooms will have wraparound balconies with a unique sliding door system that seamlessly connects the indoor and outdoor space," Udzenija says.

Common-area features will include Wi-Fi in ground-floor lobbies, amenity areas, elevators and all parkade levels, a building-wise water filtration system, an automatic car wash and manual car-wash bays with hot and cold water.

A central lobby concierge podium, shared between towers 1 and 2 of Phase 1, will house two levels of amenities, including a fitness centre with yoga studio, grand lounge, games room, pet grooming room, business centre, study rooms and a music room.

Brentwood's enviable central location, 20 minutes from downtown Vancouver, offers easy access to Trans-Canada and Lougheed highways. The Brentwood SkyTrain station on the Millennium line connects to the Expo line as well as the future Evergreen line to Port Moody and Coquitlam. The recently opened Whole Foods supermarket at the intersection of Lougheed Highway and Willingdon Avenue, Save-On-Foods at Madison Centre and a growing array of shops, restaurants and amenities are



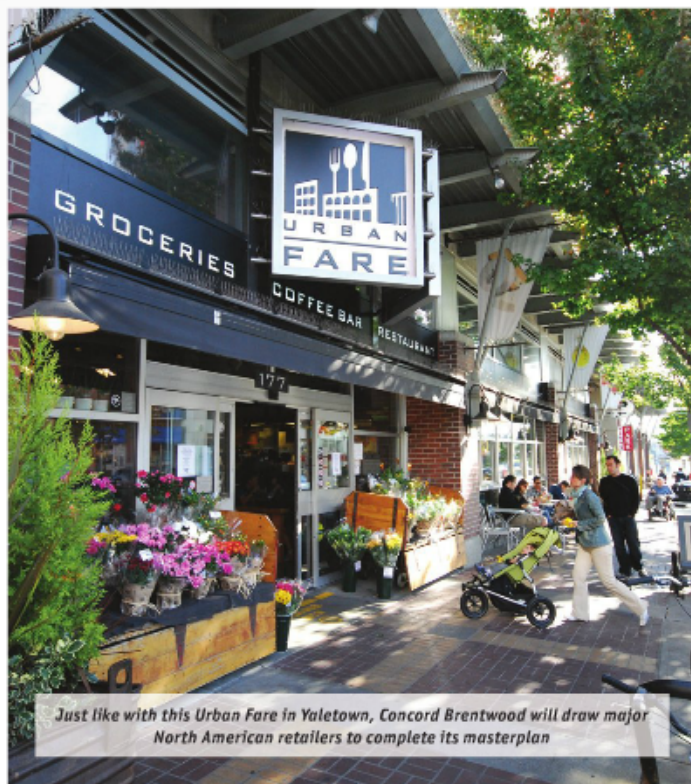
SkyTrain links and a fantastic shopping mall at Brentwood Town Centre are a stone's throw away from Concord Brentwood

within a short walk, and the vibrant, multicultural Burnaby Heights neighbourhood, just up Willingdon Avenue on Hastings Street, offers

charming cafés, European patisseries, local butcher shops, fresh food markets and an acclaimed French fine dining restaurant, the Pear Tree.

Concord Brentwood Phase 1 sales are set to open this spring. The Burnaby presentation centre, located in Metrotown, is now in its final construction stages and will soon open to the public. For information and to register for updates about the project, visit www.concorderbrentwood.com.

ALL PHOTOS COURTESY OF CONCORD PACIFIC DEVELOPMENTS



Just like with this Urban Fare in Yaletown, Concord Brentwood will draw major North American retailers to complete its masterplan